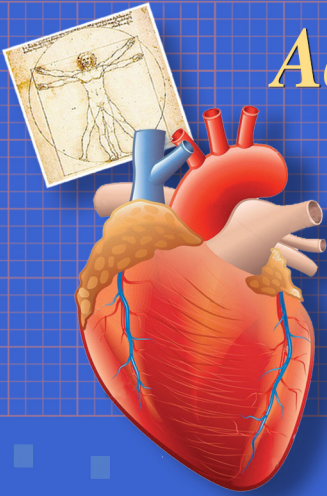


31st Annual  
**San Diego Heart Failure  
Summer Symposium**



*Advances in the  
Recognition &  
Treatment of  
Heart Failure*

*Friday & Saturday*

**June 27 & 28, 2025**

*Barry H. Greenberg, MD, FACC  
Program Director*



*Hilton La Jolla Torrey Pines - La Jolla, California*

*“Always  
excellent, each  
year even better  
than before.”  
JM*

*“I thought this  
meeting was  
excellent.”  
SR*

*“Symposium  
continues to amaze  
me with the topics  
and quality of  
presenters”  
LW*

## COURSE DESCRIPTION

To keep pace with the rapid growth in our understanding of heart failure and, most importantly, to better treat patients with this disease, the 31st Annual San Diego Summer Heart Failure Symposium will provide a comprehensive overview of emerging concepts of heart failure management and new approaches to therapy. The series of didactic presentations, case discussions and Q & A sessions are designed to efficiently deliver new information that will help provide better care to patients and offer expert advice of how to implement new advances into clinical practice.

This year's Symposium will present sessions on **The Cardiorenal Liver Metabolic Axis, Advances in Treating HFpEF, PAH and Amyloidosis, Hypertrophic Cardiomyopathy, Managing Patients with Heart Failure, Atrial Fibrillation/Preventing Sudden Cardiac Death/Genetics and Gene Therapy and Catheter Based Interventions, Shock and Management of Advanced Heart Failure.** The lectures in these sessions will provide a comprehensive overview of new drugs, devices and strategies for treating patients with heart failure and will describe practical approaches for implementation. Highlights of the Symposium will be the **11th Annual Stanley Lloyd, M.D. Lecture on "Improving the Quality of Care and Outcomes for Heart Failure", 2nd Annual Founders Lecture on "Heart Failure - Looking Back and Looking Forward: A 100 year Perspective" and Featured Talks on The Cardiometabolic-Kidney-Liver and What's New in Cardiac Transplant.** Each morning, the Symposium will start with a series of illustrative case vignettes, each one highlighting a different management strategy.

For this year's Symposium I have recruited a world-renowned faculty representing multiple disciplines as well as patient advocates who will provide an important perspective on the goals of therapy. As in the past, the Symposium will be presented in hybrid format. We encourage providers to attend the live presentations at the beautiful Hilton La Jolla Torrey Pines where they can interact with their colleagues, speakers and industry representatives over the two-day Symposium. For those who can't attend, on-line streaming of all sessions will be available. In addition, the Symposium will be available on-line for several weeks so that you will be able to return to lectures of interest or catch up on those that you missed.

## SYMPOSIUM OBJECTIVES

At the conclusion of this program, the participant should be able to:

1. Summarize current and emerging treatments available for preventing and treating heart failure and provide information to help in the selection of the most effective choices in individual patients.
2. Review strategies for implementing medical and device therapies that will lead to improved outcomes in heart failure patients.
3. Define how specific populations including minorities, women and the elderly respond to various approaches to treating risk factors and heart failure

# CME INFORMATION

## NEEDS ASSESSMENT

Heart failure (HF) currently affects well over million Americans. Moreover, prevalence is increasing in both developed and developing countries around the world. In the U.S. alone, an estimated 670,000 new cases of heart failure are diagnosed each year. HF adversely affects quality of life and increases hospitalization and mortality rates. It is the leading cause of hospitalization in elderly individuals in the United States. Moreover, within 8 years of diagnosis, 80% of men and 70% of women less than 65 years of age with new onset heart failure will die.

Our understanding of HF is changing rapidly and new treatments that help improve outcomes are available. The Symposium is designed to help clinicians synthesize new information about heart failure and integrate it into effective strategies of care of their patients. The Symposium will provide a comprehensive overview of diagnostic approaches, current evidence-based therapies and treatment strategies as well as emerging approaches for treatment.

## TARGET AUDIENCE

The target audience for this activity includes cardiologists, internists, primary care physicians, nurses and allied healthcare professionals.

## ACCREDITATION

**The AAFP has reviewed 31st Annual San Diego Heart Failure Wintere Symposium and deemed it acceptable for up to TBD Live AAFP Prescribed credits. Term of Approval is from 06/27/2025 to 06/28/2025. Physicians should claim only the credit commensurate with the extent of their participation in the activity.**

**AAFP Prescribed credit is accepted by the American Medical Association as equivalent to AMA PRA Category 1 credit(s)<sup>TM</sup> toward the AMA Physician's Recognition Award. When applying for the AMA PRA, Prescribed credit earned must be reported as Prescribed, not as Category 1.**

## CULTURAL AND LINGUISTIC COMPETENCY

This activity is in compliance with California Assembly Bills 1195 and 241 which requires continuing medical education activities with patient care components to include curriculum in the subjects of cultural and linguistic competency. Cultural competency is defined as a set of integrated attitudes, knowledge, and skills that enables health care professionals or organizations to care effectively for patients from diverse cultures, groups, and communities. Linguistic competency is defined as the ability of a physician or surgeon to provide patients who do not speak English or who have limited ability to speak English, direct communication in the patient's primary language. Cultural and linguistic competency was incorporated into the planning of this activity.

*Register for the Symposium online at:*  
**SanDiegoHeartFailure.com**

## FURTHER INFORMATION

Complete Conference Management  
3320 Third Avenue, Suite C  
San Diego, CA 92103

**SanDiegoHeartFailure.com**

PH 619-299-6673 FAX 619-299-6675  
info@ccmmeetings.com  
**www.ccmmeetings.com**

# FACULTY

## UC SAN DIEGO PROGRAM DIRECTOR



### **Barry H. Greenberg, MD, FACC**

Distinguished Professor of Medicine  
Director, Advanced Heart Failure Treatment Program  
UC San Diego  
La Jolla, CA

## GUEST FACULTY



### **Uri Elkayam, MD, FACC, FAHA, FHFSa**

Professor of Medicine  
Professor of Obstetrics and Gynecology  
Director Maternal Cardiology  
University of Southern California  
Los Angeles, CA



### **Gregg Fonarow, MD, FACC, FAHA, FHFSa**

The Eliot Corday Professor of Cardiovascular Medicine and Science  
Director, Ahmanson – UCLA Cardiomyopathy Center  
Co-Director, UCLA Preventative Cardiology Program  
David Geffen School of Medicine  
Los Angeles, CA



### **J. Thomas Heywood, MD, FACC**

Founder, Advanced Heart Failure and Mechanical Circulatory Support Program  
Director, Pulmonary Hypertension Program  
Professor of Medicine  
Scripps Clinic  
San Diego, CA



### **Rola Khedraki, MD FACC**

Director, Cardiac Intensive Care Unit  
Assistant Professor of Medicine  
Advanced Heart Failure and Transplant Cardiology  
Mechanical Circulatory Support Program  
Cardiac Amyloidosis Program  
Scripps Clinic, John R. Anderson V Medical Pavilion  
San Diego, CA



### **Rajeev C. Mohan, MD**

Director, Cardio-Oncology and Cardiac Amyloid Program  
Advanced Heart Failure and Transplant Cardiology  
Mechanical Circulatory Support Program  
Scripps Clinic Division of Cardiology  
San Diego, CA



### **Clyde W. Yancy, MD, MSc, MACC, FAHA, MACP, FHFSa, FRCP, FASPC (Hon.), FPCNA (Hon)**

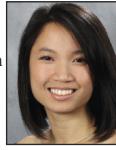
Vice Dean, Health Equity  
Magerstadt Professor  
Professor of Medicine  
Professor of Medical Social Sciences  
Chief, Division of Cardiology  
Northwestern University, Feinberg School of Medicine  
Associate Director, Bluhm Cardiovascular Institute Northwestern Memorial Hospital  
Deputy Editor JAMA Cardiology  
Past President, American Heart Association  
Chicago, IL

# FACULTY

## UC SAN DIEGO PARTICIPATING FACULTY



**Cheryl Anderson, PhD,  
MPH, MS**  
Professor and Dean, Herbert Wertheim  
School of Public Health and Human  
Longevity Science



**Trina Huynh, PharmD, BCPS**  
Transitions of Care Coordinator  
Department of Pharmacy



**Antoinette S. Birs, MD**  
Assistant Clinical Professor,  
Non Salaried  
Department of Medicine,  
Division of Cardiology



**Mark J. Kearns, MD, FRCSC**  
Cardiothoracic Surgeon  
Assistant Professor of Surgery



**Harpreet Bhatia, MD,  
MAS, FACC**  
Assistant Professor of Medicine,  
Division of Cardiovascular Medicine  
Associate Program Director,  
Cardiovascular Diseases Fellowship  
Director, Exploration and Innovation,  
School of Medicine



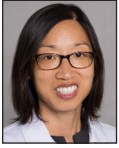
**Nick H. Kim, MD**  
Clinical Professor of Medicine  
Section Chief,  
Pulmonary Vascular Medicine  
Medical Director, Pulmonary Thromboendarterectomy Program  
Division of Pulmonary, Critical Care, and  
Sleep Medicine



**Frederick T. Han, MD,  
FACC, FHRS**  
Professor of Medicine  
UCSD Cardiovascular Institute  
Section of Cardiac Electrophysiology



**Jade Kozuch, PharmD,  
BCTXP**  
Pharmacist Specialist  
Cardiothoracic Transplant and  
Mechanical Circulatory Support



**Kimberly N. Hong, MD,  
MHSA**  
Associate Professor of Medicine  
Advanced Heart Failure,  
Heart Transplant and Mechanical  
Circulatory Support



**Gary Ma, MD**  
Interventional Cardiology  
Division of Cardiovascular Medicine



**Albert Hsiao, MD, PhD,  
FNASCI, FSCMR**  
Professor, In-Residence; Department  
of Radiology, Halıcıoğlu Data Science  
Institute  
Director, Augmented imaging/Artificial  
intelligence Data Analytics  
(AiDA) Laboratory  
Director, Medical Scientist Training  
Program SURF



**Anya Narezkina, MD**  
Associate Clinical Professor of Medicine  
Director, Cardio-Oncology Program



**Jonathan C. Hsu, MD, MAS**  
Professor of Medicine  
Section of Cardiac Electrophysiology  
Division of Cardiology



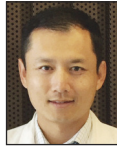
**Meghan Philbrick, PA**

# FACULTY

## UC SAN DIEGO PARTICIPATING FACULTY *Continued*



**Farshad Raissi, MD, MPH, FHRS, FACC**  
Associate Professor  
Cardiac Electrophysiology,  
Division of Cardiology



**Hao (Howie) Tran, MD, FACC**  
Associate Professor of Medicine  
Director, Heart Failure Services  
Director, Cardiogenic Shock and  
Mechanical Circulatory Support  
Division of Cardiovascular Medicine



**Ryan R Reeves, MD**  
Associate Professor of Medicine  
Director, Interventional Cardiology  
Fellowship Training Program  
UC San Diego Sulpizio  
Cardiovascular Center  
VA San Diego Healthcare System



**Marcus Anthony Urey, MD**  
Associate Professor of Medicine  
Department of Medicine



**Hilary Shapiro, MD, MSc, FACC**  
Assistant Clinical Professor of Medicine  
Advanced Heart Failure and Transplant  
Cardiology



**Nicholas Wettersten, MD, FACC**  
Associate Professor of Medicine  
Department of Cardiology



**Jorge Silva Enciso, MD, FACC**  
Professor of Medicine



**Michael J. Wilkinson, MD, FACC, FNLA**  
Associate Professor of Medicine  
Director, Lipid Clinic  
Division of Cardiovascular Medicine  
Department of Medicine  
Cardiovascular Institute



**Pam R. Taub, MD, FACC, FASPC**  
Director of Preventive Cardiology  
Director of Step Family Foundation  
Cardiovascular Rehabilitation and  
Wellness Center  
Professor of Medicine  
Division of Cardiovascular Medicine



**Andrew Willeford, PharmD, BCCP**  
Health Sciences Assistant Clinical Professor  
Skaggs School of Pharmacy and  
Pharmaceutical Sciences

### FACULTY DISCLOSURE

It is our policy to ensure balance, independence, objectivity and scientific rigor. All persons involved in the selection, development and presentation of content are required to disclose any real or apparent conflicts of interest. All conflicts of interest will be resolved prior to an educational activity being delivered to learners through one of the following mechanisms 1) altering the financial relationship with the commercial interest, 2) altering the individual's control over CME content about the products or services of the commercial interest, and/or 3) validating the activity content through independent peer review. All persons are also required to disclose any discussions of off label/unapproved uses of drugs or devices. Persons who refuse or fail to disclose will be disqualified from participating in the CME activity.

# PROGRAM

**FRIDAY, JUNE 27, 2025**

---

7:00am	<b>Registration/Coffee/Visit Exhibits</b>
7:30-8:10	<b>Coffee and Case Vignettes</b> Drs. Greenberg, Bhatia, Narezkina and Wilkinson
8:20	<i>Breakfast Served</i>

---

8:20-9:20	<b>PRODUCT THEATRE I - Non-CME</b> <b>A Near-Complete TTR Stabilizer Intentionally Designed for Patients With ATTR-CM</b> <i>Speaker:</i> Marcus Anthony (Tony) Urey, MD <i>Sponsored by:</i> <b>BridgeBio</b>
8:20	<i>Visit Exhibits</i>
9:30	<b>Welcome and Introduction to the 31st Annual San Diego Summer Heart Failure Symposium - Barry Greenberg, MD, FACC</b>

---

**SESSION I - The Cardiorenal Liver Metabolic Axis**  
Pam Taub, MD, FACC (*Moderator*)

---

9:40-10:00	<b>FEATURED LECTURE I</b> <b>The Cardiometabolic-Kidney-Liver Syndrome</b> Pam Taub, MD, FACC
10:00-10:20	<b>GLP-1 Agonists for Treating Obesity and CV Disease</b> Harpreet Bhatia, MD, FACC
10:20-10:40	<b>Novel Approaches for Optimizing Therapy of Dyslipidemia to Reduce CV Risk</b> Michael Wilkinson, MD
10:40-11:00	<b>Reducing the Risk of Cardiovascular-Kidney Disease with Finerenone</b> Barry Greenberg, MD, FACC
11:00-11:20	<b>Cardiometabolic Disease in Transplant Patients</b> Antoinette Birs, MD
11:20-11:40	<b>Identifying and Treating Chemotherapy Induced Cardiac Disease</b> Anya Narezkina, MD
11:40-12:00	<b>Update on Treating Patients with Aortic Stenosis</b> Gary Ma, MD
12:00-12:20	<b>Audience Q/A</b> Pam Taub, MD, FACC ( <i>Moderator</i> ) Drs. Bhatia, Wilkinson, Greenberg, Birs, Narezkina, Ma and Andrew Willeford, PharmD ( <i>Panelists</i> )
12:20	<i>Visit Exhibits</i>

---

12:30-1:30	<b>PRODUCT THEATRE II - Lunch Session - Non-CME</b> <b>Introduction to AMVUTTRA® (vutrisiran)</b> <i>Speaker:</i> Rola Khedraki, MD <i>Sponsored by:</i> <b>Alnylam</b>
1:30	<i>Visit Exhibits</i>

---

*continued*

# PROGRAM

**FRIDAY, JUNE 27, 2025** *continued*

---

**SESSION II - Advances in Treating HFpEF, PAH and Amyloidosis**

Marcus Anthony (Tony) Urey, MD (*Moderator*)

---

- 1:45-2:05      **Advances in Managing Patients with HFpEF**  
Hilary Shapiro, MD
- 2:05-2:25      **Defining and Treatment Pulmonary Arterial Hypertension (PAH) in 2025: What's the Best Approach?**  
Nick H. Kim, MD
- 2:25-2:45      **Diagnosing and Treating Amyloidosis: How Do the Experts Do It?**  
Marcus Anthony (Tony) Urey, MD
- 2:45              *Coffee Break/Visit Exhibits*
- 

**SESSION III - Hypertrophic Cardiomyopathy**

Jorge Silva Enciso, MD (*Moderator*)

---

- 3:00-3:20      **Imaging the Heart to Identify Patients with HCM and Define Risk of Future Events**  
Albert Hsaio, MD
- 3:20-3:40      **Myosin Inhibitors and Other Novel Approaches for Treating Hypertrophic Cardiomyopathy**  
Jorge Silva Enciso, MD
- 3:40-4:00      **Gene Therapy for HCM**  
Barry Greenberg, MD
- 4:00-4:15      **Patient Perspective**  
HCM Patient - TBD
- 4:15-4:45      **Case Presentation / Audience Participation**  
Marcus Anthony (Tony) Urey (*Moderator*)  
Drs. Shapiro, Silva Enciso, Hsaio, Greenberg, TBD (*Panelists*)
- 4:45              **Adjourn for the Day**

*continued*





# PROGRAM

## SATURDAY, JUNE 28, 2025

7:00am	<b>Registration Open</b>
7:30-8:10	<b>Coffee and Case Vignettes</b> Drs. Greenberg, Wettersten, Elkayam, Heywood
8:20	<i>Breakfast Served</i>
8:20-9:20	<b>PRODUCT THEATRE III - Non-CME</b> <b>Rethinking Hyperkalemia Management in Patients on RAASi Therapy</b> <i>Speaker:</i> Vicky Kuo, PharmD, BCTXP <i>Sponsored by:</i> AstraZeneca
9:20	<i>Visit Exhibits</i>
9:30	<b>Welcome and Introduction to the 31st Annual San Diego Summer Heart Failure Symposium - Day 2</b> - Barry Greenberg, MD, FACC
<b>SESSION IV - Management of Patients with Heart Failure</b> Barry Greenberg, MD, FACC ( <i>Moderator</i> )	
9:40-10:10	<b>11th Annual Stanley Lloyd, MD Lecture</b> <b>Improving the Quality of Care and Outcomes for Heart Failure</b> Gregg Fonarow, MD
10:10-10:30	<b>Managing Social Determinants That Predispose Patients to Heart Failure</b> Cheryl Anderson, PhD
10:30-10:45	<b>Selecting Additional Guideline Recommended Therapies That Improve Outcomes</b> Uri Elkayam, MD
10:45-11:00	<b>Remote Monitoring Using Wearable and Implantable Devices</b> J Thomas Heywood, MD, FACC
11:00-11:15	<b>New Diuretic Options for Managing Volume Overload</b> Nicholas Wettersten, MD
11:15-11:30	<b>Cardiac Contractility Modulation</b> Farshad Raissi, MD
11:30-11:45	<b>Living with Heart Failure: A Patient's Perspective</b> Rhonda Monroe
11:45-12:10	<b>Case Presentation &amp; Panel Discussion with Audience Participation</b> Antoinette Birs, MD ( <i>Presenter</i> ) Drs Fonarow, Anderson, Heywood, Elkayam, Wettersten, Raissi, Trina Huynh, PharmD and Rhonda Monroe ( <i>Panelists</i> )
12:10	<i>Visit Exhibits</i>
11:45-12:45	<b>PRODUCT THEATRE IV - Lunch Session - Non-CME</b> <b>hATTR Progression: Addressing Polyneuropathy</b> <i>Speaker:</i> Rajeev Mohan, MD <i>Sponsored by:</i> AstraZeneca
1:20	<i>Visit Exhibits</i>

*continued*

# PROGRAM

**SATURDAY, JUNE 28, 2025** *continued*

1:20-1:45      **FOUNDERS LECTURE**  
**Heart Failure - Looking Back and Looking Forward:  
A 100 year Perspective**  
Clyde Yancy, MD

**SESSION V - Atrial Fibrillation/Preventing Sudden Cardiac  
Death/Genetics and Gene Therapy**

Kimberly Hong, MD (*Moderator*)

1:45-2:00      **Atrial Fibrillation: Rhythm vs Rate Control?  
Anticoagulation vs LAA Occlusion?**  
Jonathan Hsu, MD

2:00-2:15      **Preventing Sudden Cardiac Death; Role of Wearable Devices and  
New ICDs**  
Fred Han, MD

2:15-2:30      **Evaluating and Counseling Patients (and Their Families) with  
Suspected Genetic Cardiomyopathy**  
Kimberly Hong, MD

2:30-2:45      **Advances in Gene Therapy for Patients with Cardiomyopathy**  
Barry Greenberg, MD

2:45              *Coffee Break/Visit Exhibits*

**SESSION VI - Catheter Based Interventions, Shock and Management of  
Advanced Heart Failure**

Hao (Howie) Tran, MD (*Moderator*)

3:00-3:15      **Catheter Based Interventions for Mitral and Tricuspid  
Valve Disease**  
Ryan Reeves, MD

3:15-3:30      **Recognition and Treatment of Cardiogenic Shock**  
Hao (Howie) Tran, MD

3:30-3:45      **Use of Percutaneous Support Devices to Treat Patients with Shock**  
Rola Khedraki, MD

3:45-4:00      **FEATURED LECTURE II**  
**What's New in Cardiac Transplant**  
Marcus Anthony (Tony) Urey, MD

4:00-4:15      **Improving Outcomes with LVADs**  
Mark Kearns, MD

4:15-4:30      **Heart Transplant: A Patient Perspective**  
Speaker TBD

4:30-4:50      **Panel Discussion**  
Hao (Howie) Tran, MD (*Moderator*)  
Drs. Yancy, Hong, Greenberg, Urey, Khedraki, Kearns,  
Meghan Philbrick PA, Jade Kozach PharmD (*Panelists*)

4:50              **Adjourn Until 2026 for the 32nd Annual Summer Symposium**

# HOTEL

## **Hilton La Jolla Torrey Pines**

10950 North Torrey Pines Road  
La Jolla, California, 92037, USA  
Tel: (858) 558-1500

You'll find us amid the Torrey Pines Golf Course with views of the Pacific Ocean from our rooms. We're less than five miles from Torrey Pines State Beach and the hiking trails of Torrey Pines State Reserve. Enjoy our outdoor pool and tennis courts, as well as exclusive access to daily golf tee times. We are located 15 miles north of San Diego International Airport in the exclusive area of La Jolla and overlooking the legendary Torrey Pines Golf Course



**Special Symposium Rate - Single/Double:** \$239 per night  
Plus San Diego occupancy tax of 10.50% and resort fee of \$36.

**First night's deposit or credit card guarantee must accompany reservation.  
To secure this special symposium rate you must reserve by: **May 27, 2025****

For Reservations by phone, mention Group Code: **TBD**

### **Resort Fee**

For San Diego Heart Failure Conference attendees, this charge will be offered at a special rate of \$36 per room, per night, plus applicable state and local tax to include the following benefits:

- 2 glasses of house wine OR 2 tap beer of choice at the bar
- Access to Shiley's Sports Complex
- Resort games, toys, & Yoga equipment
- 15% off Torrey Pines Pro Shop
- WI-FI basic access
- 2 bottles of water per day, based on double occupancy – max 2/rm
- 20% gift shop discount
- Access to sports courts and equipment rentals

### **Parking**

We are pleased to extend a discounted day event parking rate for attendees at \$20.00 per car self-parking and \$26.00 per car valet on the day(s) of the event. Standard overnight parking rates apply (see hotel for current rate).

# REGISTRATION

## San Diego Heart Failure Summer Symposium 2025

First Name \_\_\_\_\_

Last Name \_\_\_\_\_

Title \_\_\_\_\_

Office Address \_\_\_\_\_

City \_\_\_\_\_ State \_\_\_\_\_ Zip \_\_\_\_\_

Phone \_\_\_\_\_ Fax \_\_\_\_\_

Email \_\_\_\_\_

Professional Specialty \_\_\_\_\_

Special Needs for Disabled \_\_\_\_\_

REGISTRATION FEES	on or before May 19	on or after May 20
Physician / Industry	\$250	\$350
Nurse & Allied Health Care	\$149	\$199
Students with Student ID*	\$50	\$50

*\*with letter from Department Supervisor*

### CREDIT CARD PAYMENT (Visa, Mastercard, Am Ex or Discover)

Name \_\_\_\_\_

Card Number \_\_\_\_\_

Exp. Date \_\_\_\_\_ Security Code \_\_\_\_\_

Name on Card \_\_\_\_\_

Billing Address \_\_\_\_\_

Amount \$ \_\_\_\_\_

Signature \_\_\_\_\_

**Register Online: [SanDiegoHeartFailure.com](http://SanDiegoHeartFailure.com)**

### CHECK OR MONEY

### ORDER PAYMENT

(in US dollars)

*Make payable to:*

**San Diego Heart Failure  
Symposium**

### MAIL OR FAX TO:

Complete Conference Management

3320 Third Avenue, Suite C

San Diego, CA 92103

Fax: 619-299-6675

## SYMPOSIUM CANCELLATIONS

If your registration must be cancelled and a refund of your fee is desired, your fee, less \$35 for administrative costs, will be refunded upon receipt of a written request that includes your signature. No refunds will be made after **June 9, 2025**.